



Turn to the Experts.™

i-Vu CCN Trending

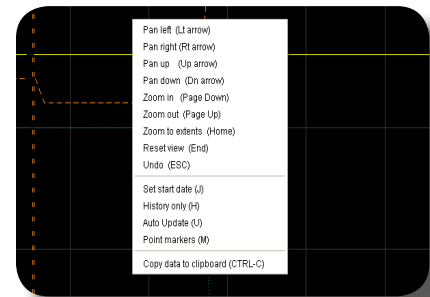
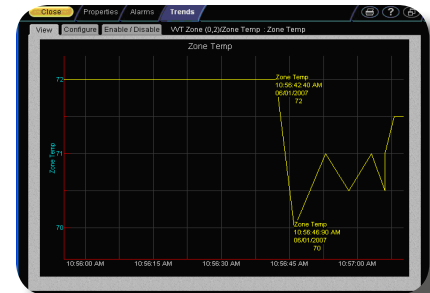
It's Automatic

i-Vu's automatic trending capabilities mean that a history of your equipment's operation is being saved every 20 minutes without any special setup. Trends can be easily modified to sample at a different interval or on change of value instead. Trends are automatically accumulated for up to 7 days in i-Vu CCN Standard and Plus, but can be adjusted in Plus to accumulate for up to 62 days.

Viewing Trends

Viewing trends is effortless with i-Vu. Simply point and click to a piece of equipment in the navigation tree, and you will be presented with a comprehensive list of trend points that are already enabled. Pick any point to view the trend graph. While viewing the trend graph, there are many tools at your disposal:

- Use arrow keys to pan the trend graph in different directions.
- Draw a rectangle around a specific area to zoom-in on that data.
- Use the Page Down key to zoom-out on specific trend data.
- Ctrl+click a trend sample on the graph to view the point name, the time and date when the sample was read, and the exact point value.
- Enter a specific start date to jump to the trend graph for that date.
- Show point markers for each data point in the graph.
- Copy the trend graph data that is being displayed on the screen and paste it into Excel.



	A	B	C
1			
2		Time	Zone Temp
3		6/1/07 10:56 AM	72
4		6/1/07 10:56 AM	70
5		6/1/07 10:56 AM	71
6		6/1/07 10:56 AM	70.5
7		6/1/07 10:57 AM	71
8		6/1/07 10:57 AM	70.5
9		6/1/07 10:57 AM	71
10		6/1/07 10:57 AM	71.5

Creating Comparison Trend Graphs

You can also graph multiple trend points simultaneously to help monitor and troubleshoot your system. A comparison trend graph can display up to four graphs on the same page. Each graph can display up to 4 similar points – 4 binary points or 4 analog points.

With i-Vu's extensive trend capabilities, troubleshooting your Carrier system has never been easier!

